

## SAINT MICHAEL AND ALL ANGELS CONSTRUCTION HIGHLIGHTS



### PROJECT TEAM

THE BECK GROUP – PROJECT LEADER  
Graham Comstock  
PRITCHARD ASSOCIATES - Representative  
Brett Ratliff  
SAINT MICHAEL AND ALL ANGELS  
Colleen O'Hara



### First Two Weeks of November:

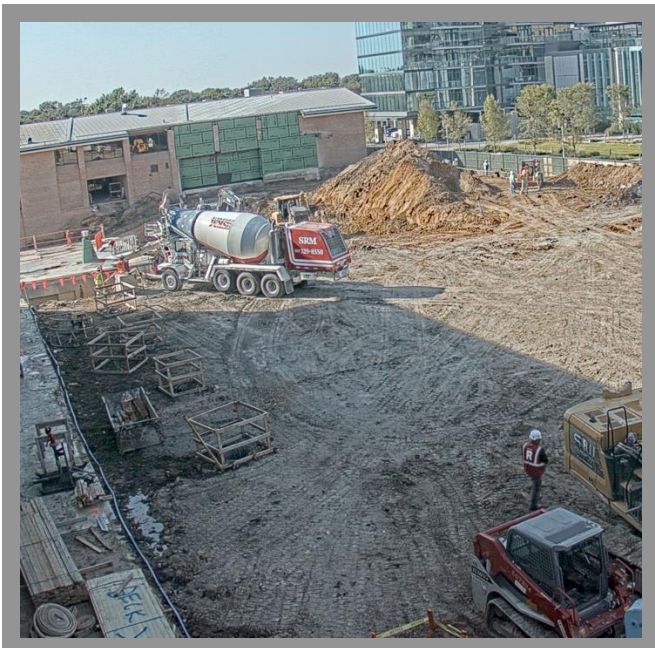
Earthwork continues

- Earthwork continues as we encounter tan limestone and grey limestone
- Earthwork reaches 130 trucks/day at peak
- Excavation is complete mid-month

### Last Two Weeks of November:

Continue to make progress on foundations:

- Pier drilling is mobilized and makes progress
- Approximately 140 piers are drilled into bearing strata
- Tower crane foundation is completed, first section set
- First sequence of grade-beams are ready to pour



### Looking Forward...

As we move into December, we will continue making progress on the foundations including grade-beams, foundation walls, and columns. Additionally, many sub-surface utilities will be installed including subsoil drainage, sump basins, etc.